

About JMC Design Services



JMC Design Services is the DBA for John M. Cardone, a mechanical engineer with over 25 years of experience in mechanical design and electronics packaging. He has a B.S. degree in Mechanical Engineering as well as extensive experience in numerous CAD tools (including ProE, Solidworks, Computervision, Unigraphics NX, Autocad, Protel, Orcad & Pads). Formerly a senior engineer at the Jet Propulsion Laboratory for over 20 years, his tasks there included electronics and optics packaging, mechanical design and analysis, design process authoring and spacecraft configuration control. When not working he enjoys ranch life in the Shasta Valley near the northern California town of Grenada.

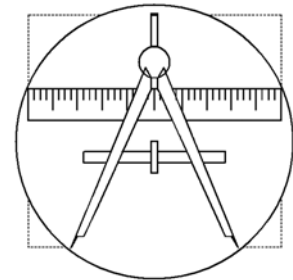
.

JMC Design Services
P. O. Box 397
Grenada, CA. 96038-0397



JMC Design Services

ELECTRO- MECHANICAL DESIGN & DOCUMENTATION



FAST ACCURATE DEPENDABLE

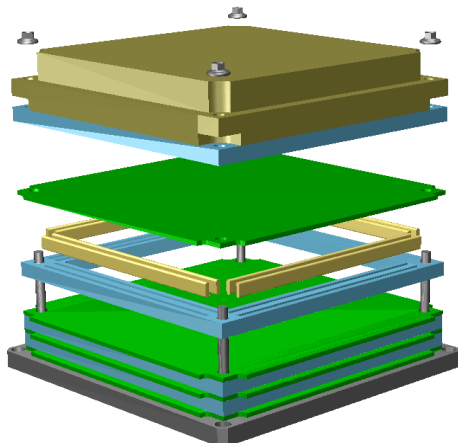
Phone: 530.436.2216
Cell: 805.796.0787
jmc@jmcdesignservices.com
www.jmcdesignservices.com

ELECTRO-MECHANICAL DESIGN SOLUTIONS FROM CONCEPT TO PRODUCTION

From start to finish JMC Design Services can assist you in achieving your electro-mechanical design goals.

• Conceptual Design

I'll assist you in finding the correct design solution. Form, function, materials, technology, cost and production issues will all have trade space to suit your needs.



Elastomeric interconnect design solution

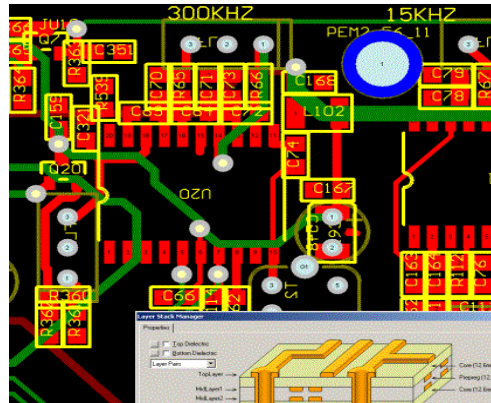
• Schematic/Wiring Diagram

Whether intended for a printed wiring design, hierarchical system design, cabling, or process description schematic diagrams are thoughtfully rendered with a goal of logically conveying information.

Full Electronic Rules Checking, multiple net-list, parts list and design output formats, ASME Y14.100M.

• Printed Wiring Board Design

Rapid turn prototyping or high volume design of Analog, Digital, Power, RF and mixed technology printed wiring boards. Full design rule checking, documentation and electronic output to fit your needs.

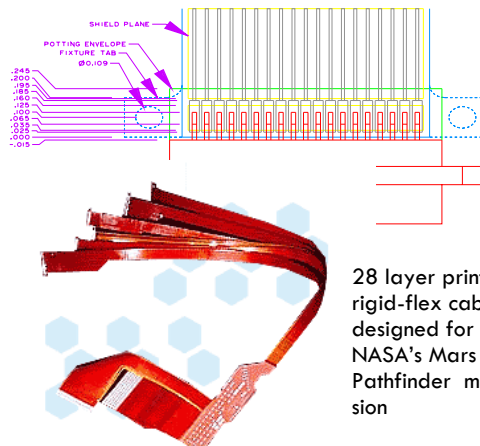


Printed Wiring Board Design

- Analog / Digital / Power / RF
- Rapid Turn Prototyping
- Full Documentation

• Flex / Rigid-Flex Design

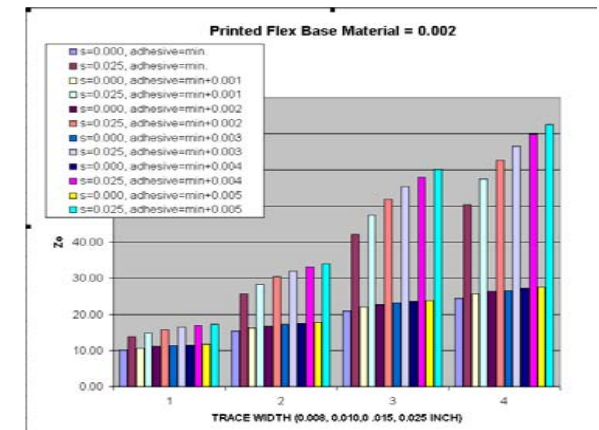
Flexible and rigid-flexible printed wiring board and cabling design is our specialty. If your design solution includes flex, we'll help you find the most appropriate solution.



28 layer printed rigid-flex cable designed for NASA's Mars Pathfinder mission

• Design Analysis & Reporting

We can pull together the information you need to sell your design concept or to document its function. Be it controlled impedance, low magnetic signature, or loop resistance drops, we can provide the data you need.



• Engineering Support Services

In addition JMC Design Services offers the following services so you'll have more time to do what you do best.

- Standard electronic part creation (sch. & pwb)
- Standard mechanical part (neutral file formats)
- Process documentation & authoring
- Mechanical piece part & assembly documentation

JMC Design Services

P.O. Box 397
Grenada, CA 96038-0397

Phone: 530.436.2216

Cell: 805.796.0787

Email: jmc@jmcdesignservices.com

<http://www.jmcdesignservices.com>